



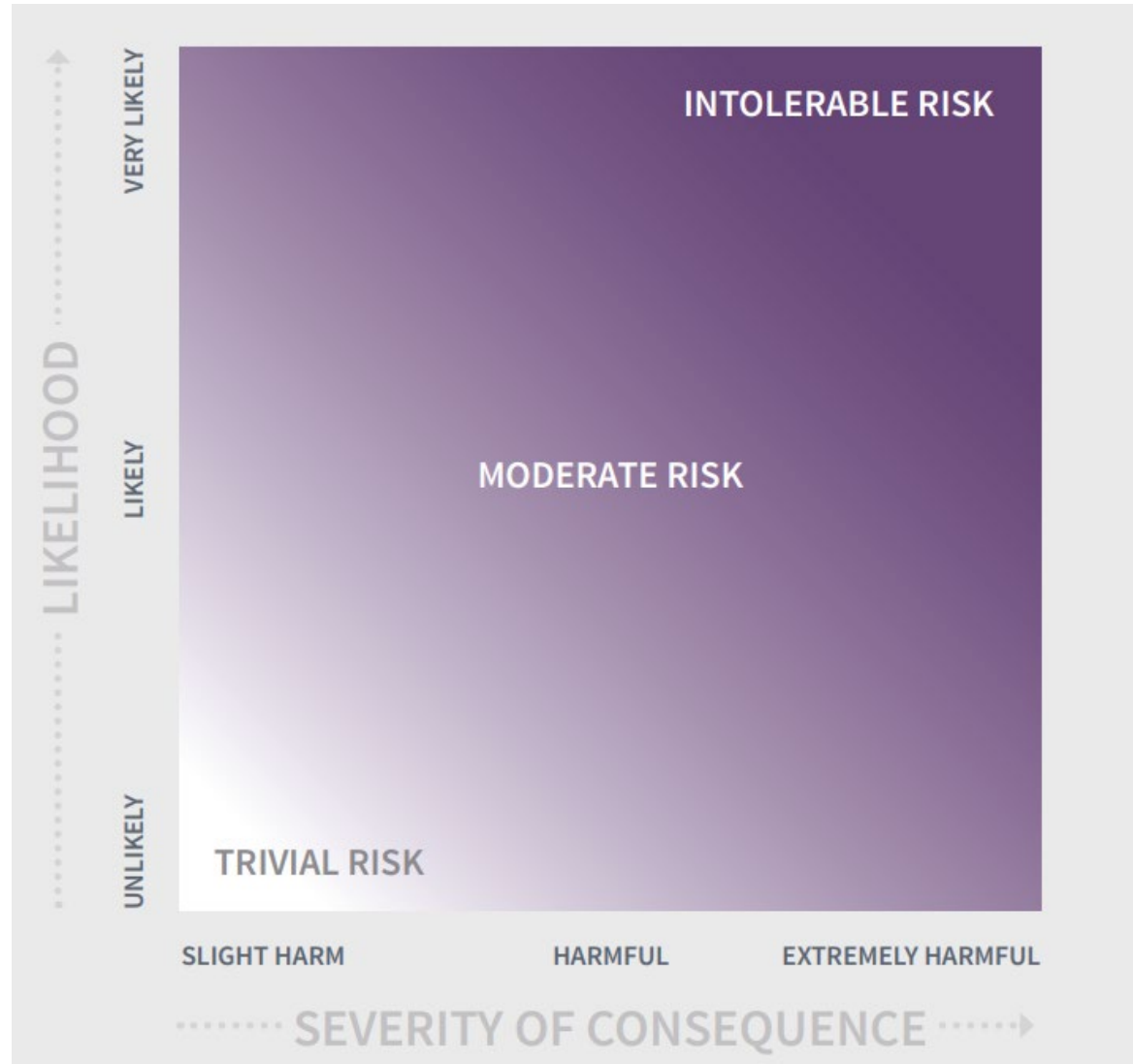
Forestry England

Framework & Control Measures

Chris Spencer
Health and Safety Manager



Framework & Control Measures



- 250,000ha public forest estate
- Majority of land open access
- 1,100 Staff
- 400 volunteers

Managing recreation facilities

1. [Managing recreation facilities](#)
2. [The law](#)
3. **Visitor safety**
4. [Facility inspections](#)
5. [Equality and accessibility](#)

3. Visitor safety

Quick links in this section:

- [Managing visitor safety in the countryside](#)
- [Risk assessment](#)
- [Risk benefit](#)
- [Water safety](#)





Framework & Control Measures



Risk control spectrum

GENERAL LEVEL OF VISITOR USE, LOCATION AND TERRAIN

Undeveloped

Wild and rugged countryside; remote forests and landscapes. Very low visitor numbers.

Lightly developed

Wider forest, moorland, coast and countryside; extensive farmed land; remote waterways. Low visitor numbers.

Moderately developed

Urban fringe; country parks; intensively farmed land; recreational forests; busy waterways. Moderate visitor numbers.

Heavily developed

Urban environment; easy terrain; surfaced paths; city-centre buildings and waterfronts; staffed facilities. High visitor numbers.



LEVEL OF VISITORS' SKILL, SELF-RELIANCE AND PERSONAL RESPONSIBILITY

Advanced

Competent personal safety skills, planning, training and experience are expected. Visitors accept responsibility for their own safety.

Moderate

Skills, awareness of risks and self-reliance are important. Visitors understand surroundings and take some responsibility for their own safety.

Minor

Self-reliance, awareness of risks and personal responsibility encouraged but not expected. Visitors have some experience and knowledge of surroundings.

Minimal

No previous experience is expected. Visitors should follow advice and act responsibly.

LEVEL OF MANAGEMENT INTERVENTION

Minimal

Physical safety measures unlikely. Routine information about site conditions not likely but arrangements made for exceptional circumstances.

Minor

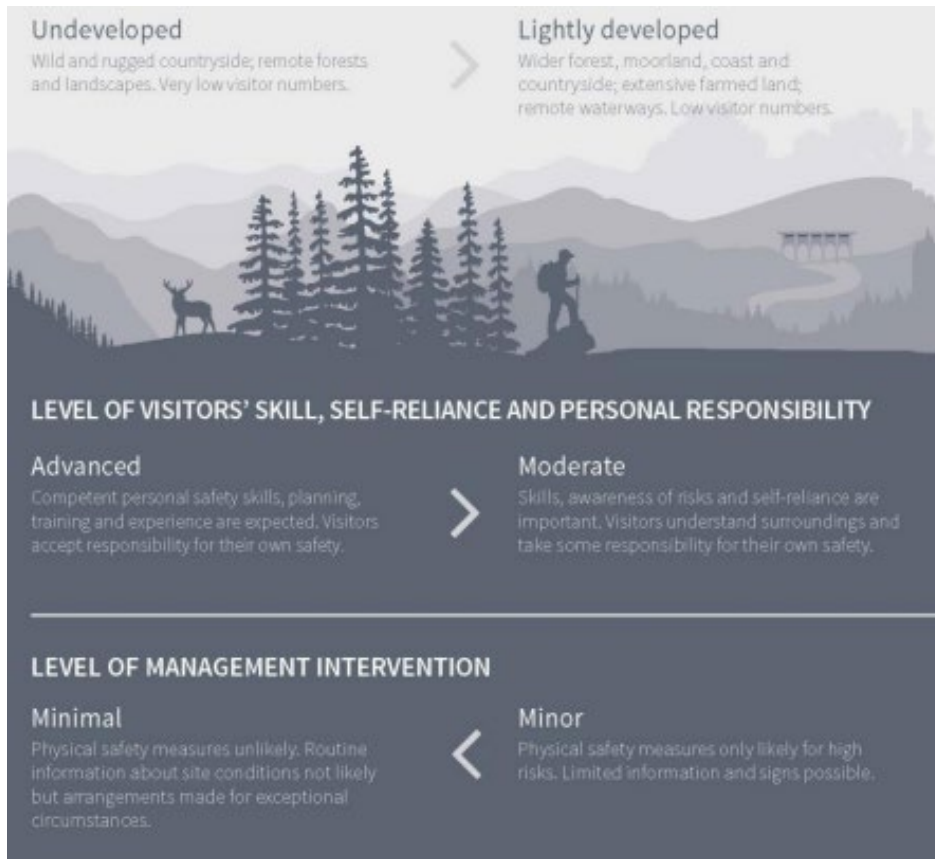
Physical safety measures only likely for high risks. Limited information and signs possible.

Moderate

Some physical intervention for significant risks likely. Possibly some warning signs, leaflets and occasional staff presence.

Advanced

Physical safety measures likely. Managers actively manage risk for first time visitors. Likely to be warning signs, advance information about hazards and regular staff presence on site.




Corporate / Job Risk Assessment			
Task /Activity /Item:	Management of water bodies that are in undeveloped/lightly developed locations where visitor numbers are low (as described in the Visitor Safety Group Risk Control Spectrum)		
Mandatory training	Risk Assessment, Public Access and Safety in the Forest		
Personnel exposed:	Members of Public		
Person(s) conducting Assessment:	Chris Spencer - Health, Safety & Technical Training		
Reference Number:	CRA/10	Date:	July 22

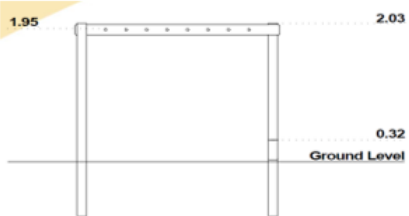
- Minimal management interventions required for water body in an undeveloped / lightly developed area. Visitors' levels of skill, self-reliance & personal responsibility expected to be moderate to advanced.
- Access into the water is not promoted.
- Forestry England webpages contain materials advising about water safety within the Public Forest.



Framework & Control Measures

Play Statement

Project Name	Monkey Bars
Brief Description	<p>Aimed at 6-14 year olds, these wooden monkey bars are part of an activity loop</p> <p>Installed: 1997 Company: Playdale</p> 
Expected Play Benefits;- (A benefit is something that promotes or enhances the well-being of members of the public or society as a whole)	<ol style="list-style-type: none"> 1. Pleasure and fun 2. Improves balance & coordination 3. Overcoming obstacles 4. Promotes physical development 5. Tests agility 6. Provides a context from imaginative game play
Location	Wendover Woods
Expected Lifespan / removal method	<p>Will be removed in line with manufacture instructions</p> <p>Laminated Timber Poles and Steel Ground Fixings Covered by a 20 year guarantee</p> <p>Laminated Timber Poles - Timber Ground Fixed Covered by a 15 year guarantee</p> <p>Sawn Timber Covered by a 15 year guarantee</p>

Key Risks Associated with Project		Who is at Risk?	Level of Risk	Control Measures	Monitoring and Maintenance
Falling from height	<p>Providing the equipment is used in line with its intended use, the greatest distance to fall is 195 centimetres, minus the height of the user</p> 	Visitors including children	Low	<p>Daily, visual inspection by the Duty Ranger</p> <p>Monthly, formal inspection by a designated Ranger</p> <p>RPII accredited inspection annually</p> <p>Perform immediate repair/close any unsafe items until safe to use</p> <p>Compliance with manufacturers installation and maintenance guidelines</p> <p>Surfacing maintained to correct depth in line with FC guidance and EN1177</p> <p>Signage to inform children require adequate supervision at all times in the play area</p>	<p>All visual inspections recorded</p> <p>Monthly inspections checked by line manager</p> <p>Annual audit of inspections by Glyn Bradbury</p> <p>Accidents monitored by site manager</p> <p>All maintenance parts purchased from approved supplier (EN1176)</p>

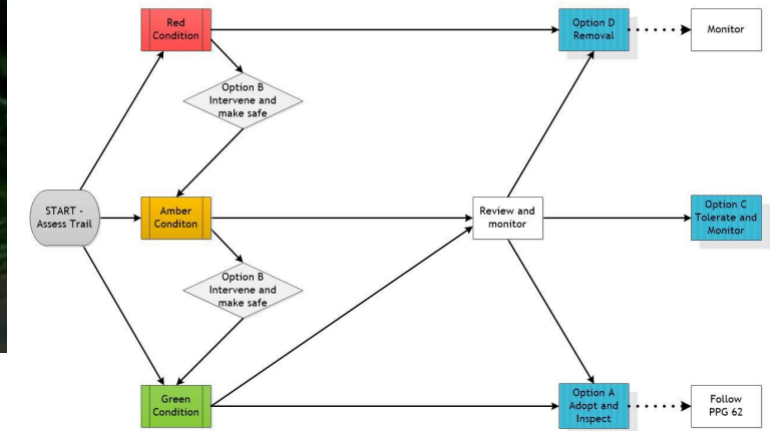


Framework & Control Measures



Appendix 2 - Decision Making Flowchart

This flow chart is designed to help you manage your unauthorised trail or desire line. You will find descriptions of each answer in the following pages.







How our cycling trails are graded

Green Easy	Expect: Relatively flat, wide and smooth trails. May include gentle climbs, descents, rollers and berms, with easy to avoid features such as rocks and potholes. Surface might be loose, uneven or muddy at times.
Blue Moderate	Expect: A mixture of climbs and descents with moderate gradients, technical features like tree roots and rock steps; jumps and berms. Rollable features at controlled speed. Variable surfaces.
Red Difficult	Expect: A mixture of steep climbs, descents and/or avoidable features. Larger jumps, berms and rollable features at controlled speed. Technical features such as tree roots, drop-offs and large rocks. Very variable surfaces.
Black Severe	Expect: Long, steep climbs, descents and jumps. Numerous hazards including drop-offs, sharp corners and difficult features. Rapid rate of surface change. Commitment required.
Double-black Extreme	Expect: Very fast and steep descents. Large drop-offs, jumps and unavoidable obstacles that require high levels of skill and commitment. Extreme level of exposure or risk. Rapid rate of surface change.
Forest road & similar	Expect: Gradients can be steep or variable. Surfaces may be uneven, loose or potholed. Navigation skills are useful (routes not always waymarked). Look out for vehicles, forestry work and other visitors.



Forestry
England

Growing the future